

# Comparison of dimensions/Confronto dimensioni

2.2 kW

## K5-14 (100 B5 motor)

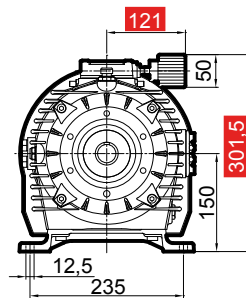
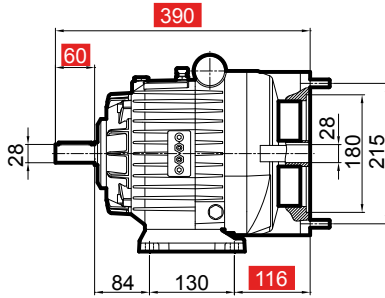
All mounting dimensions are the same, only coloured measures are different  
Tutte le quote di montaggio sono le stesse, solo quelle colorate sono diverse

319,2

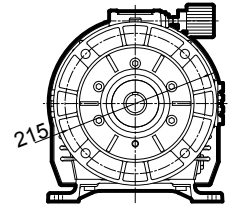
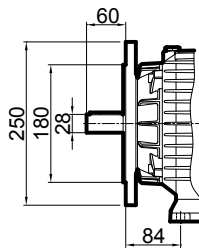
**K5**

100 B5 motor  
Restyling 14

**NEW**



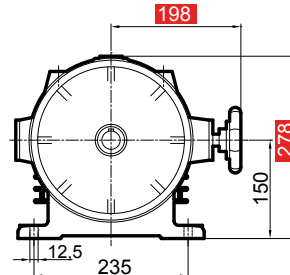
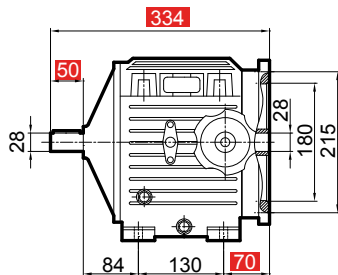
Con flangia uscita  
With output flange



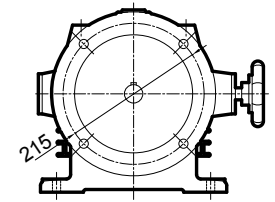
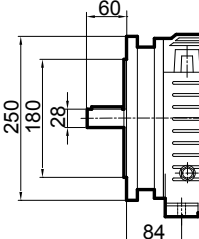
**14**

100 B5 motor

**OLD**



Con flangia uscita  
With output flange



## ADVANTAGES/VANTAGGI

The new K2-K4-K5 variator is a restyling of type A2-A4-A8-A10-A12. All the fixing dimensions are unchanged, only few secondary measures change.

The new model has the same performance of previous one, but with some other functional advantages for which you can see next table.

Il nuovo variatore K2-K4-K5 è un restyling dei tipi A2-A4-A8-A10-A12. Tutte le misure di fissaggio sono inalterate, cambiano solo alcune quote secondarie.

Il nuovo modello ha le medesime prestazioni del precedente, ha però in aggiunta alcuni vantaggi funzionali di cui alleghiamo a fianco una tabella.

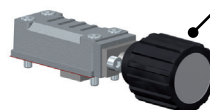
	New K5	Old 14
<b>Input Rotation</b> Rotazione Entrata		
<b>Mounting position</b> Posizione montaggio	<b>UNIVERSALE</b> <b>UNIVERSALE</b>	DA SPECIFICARE TO BE SPECIFIED
<b>Output Torque</b> Coppia Uscita	<b>REGOLABILE</b> <b>ADJUSTABLE</b>	NON DISPONIBILE NOT AVAILABLE
<b>Speed Indicator Wheel</b> Ruota Fonica	<b>INCLUSA</b> <b>INCLUDED</b>	ESCLUSA EXCLUDED
<b>Speed controls</b> Comandi di velocità	<b>STESSI</b> <b>SAME</b>	STESSI SAME

### Kit codes/Codici kit

Uscita/Output

shaft Ø [mm]	Kit code
28	K5KITUSCD28

K5MODBASE



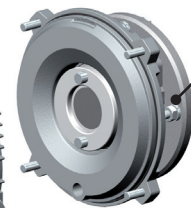
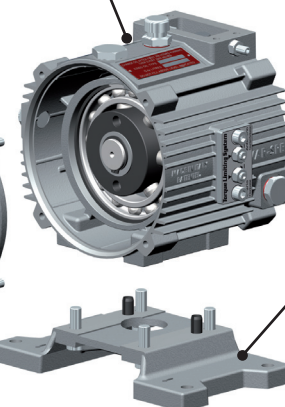
same as A10/stessi dell'A10

Input/Entrata

Size	Kit Code
100 B5	K5KITENT

Out. Flange/Flangia usc.

Size	Kit Code
100 B5	K5KITFLU100-112



Feet/Piedini

Type	Kit Code
14	K5PIEDI14